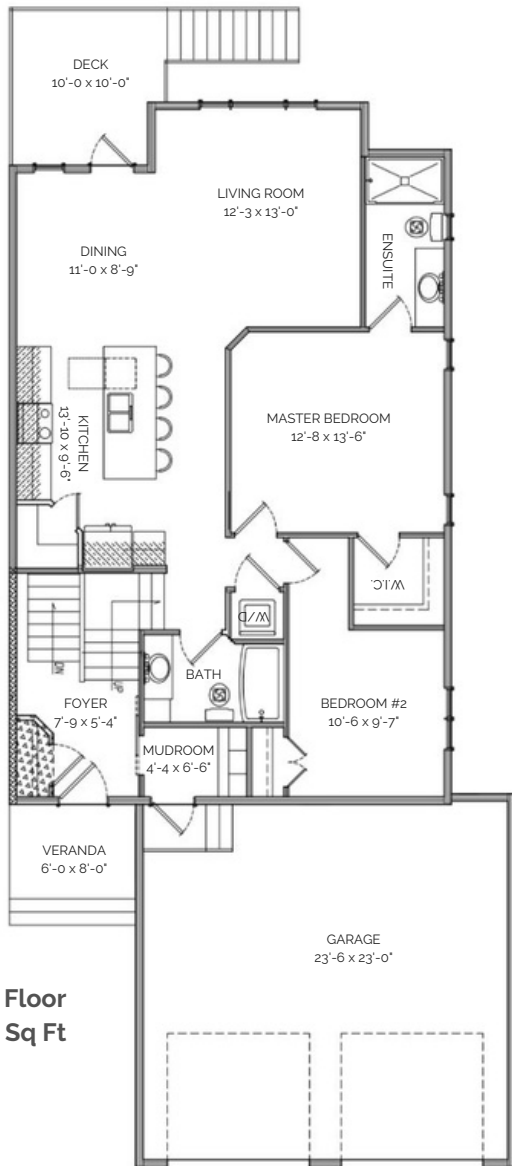


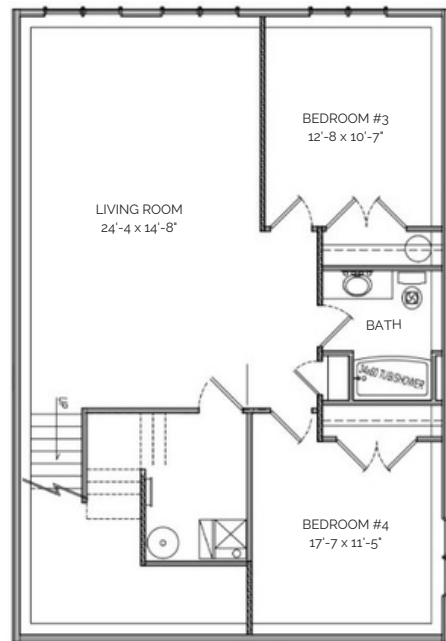


THE CORAL BI-LEVEL

1153 SQ FT | 2 BDRM | 2 BATHS



Main Floor
1153 Sq Ft



**Future Basement
Development**
931 Sq Ft

EXPERIENCE MORE™
MORE VALUE | MORE INNOVATION | MORE IN EVERY HOME



PHONE 403-394-7554
EMAIL sales@cedarridgehomes.ca
WEBSITE www.cedarridgehomes.ca